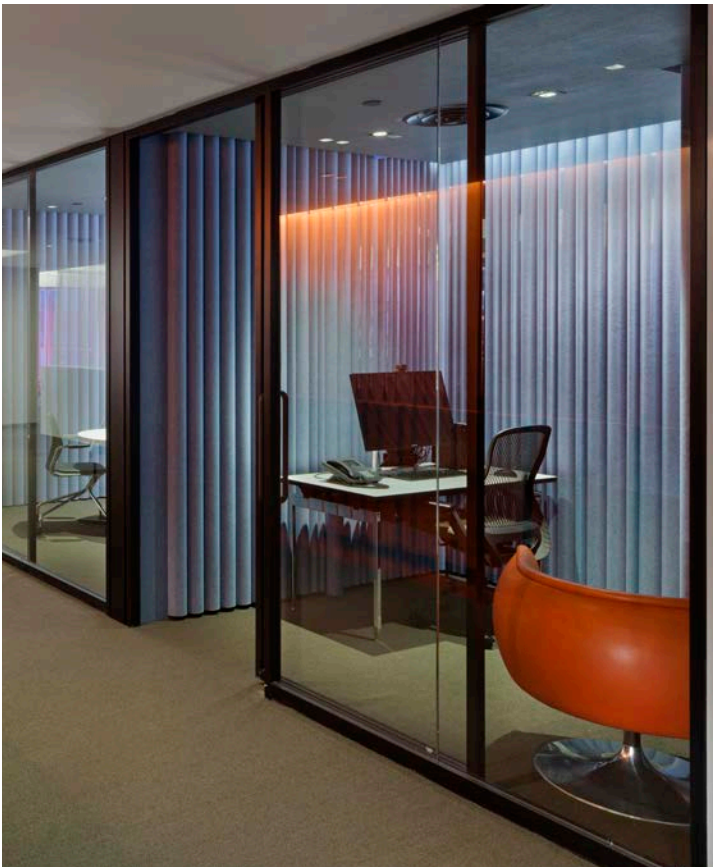




filzfelt

ARO Plank 1

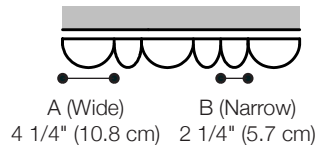
# About



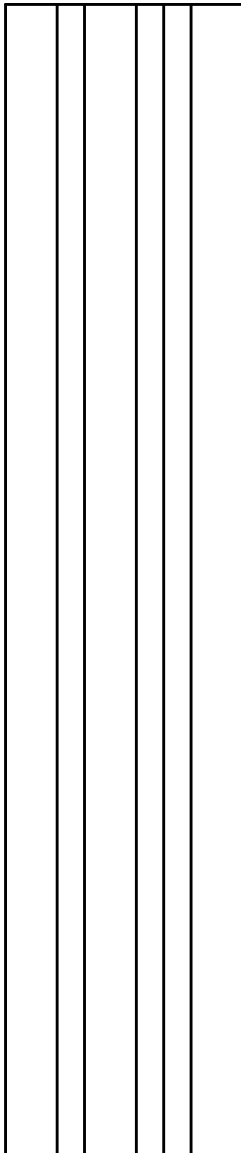
ARO Plank is a wall system composed of modular planks that assemble to create standard patterns, yielding a continuous, acoustically absorptive architectural finish. ARO Plank 1 has two distinct half round modules that are composed of felt-covered extruded acoustic foam and available in four standard configurations. The planks install quickly and easily with FilzFelt's Interlock Mounting System and are available in 63 colors of 3mm Wool Design Felt.

The ARO Collection is an Interior Design HiP Performance Wonder award winner.

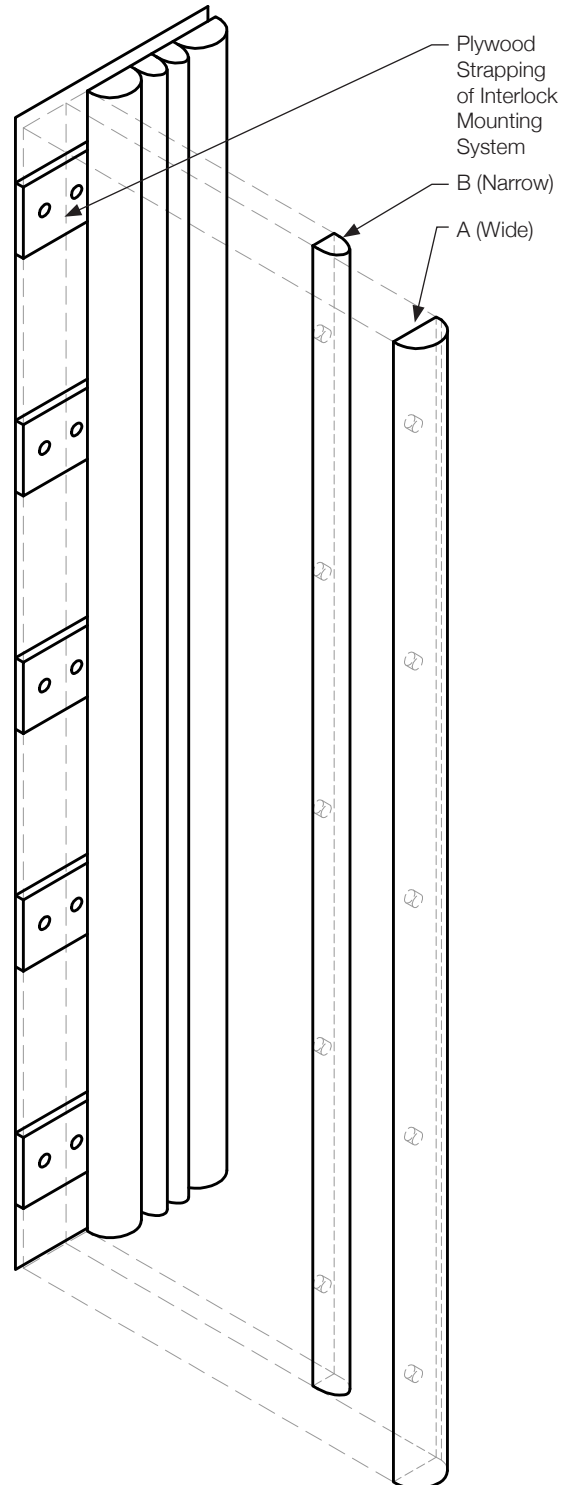
# About



**1 Plan**  
Scale: 3/4" = 1'-0"

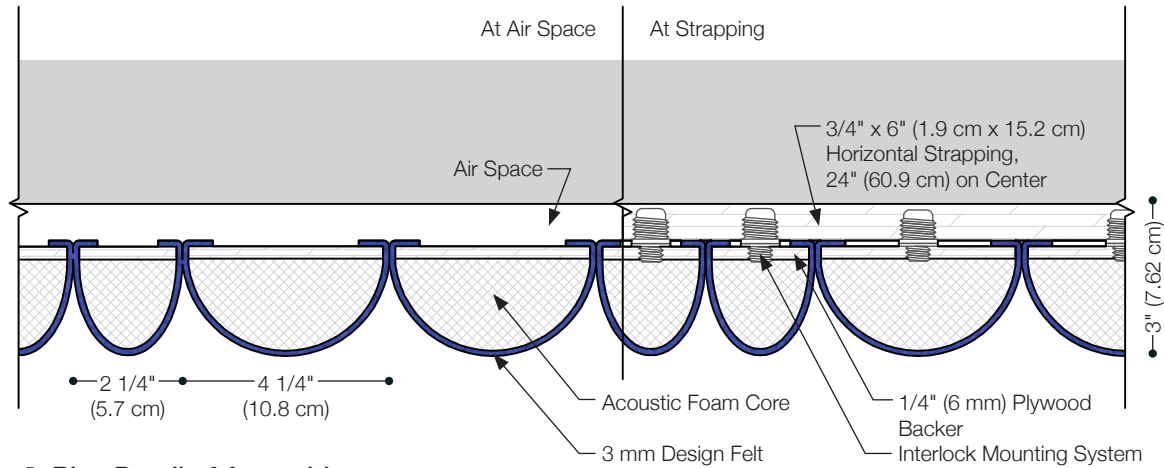


**2 Elevation**  
Scale: 3/4" = 1'-0"

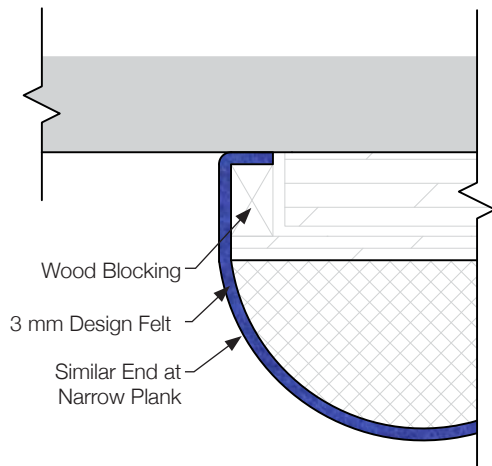


**3 Exploded Axonometric**  
Scale: 3/4" = 1'-0"

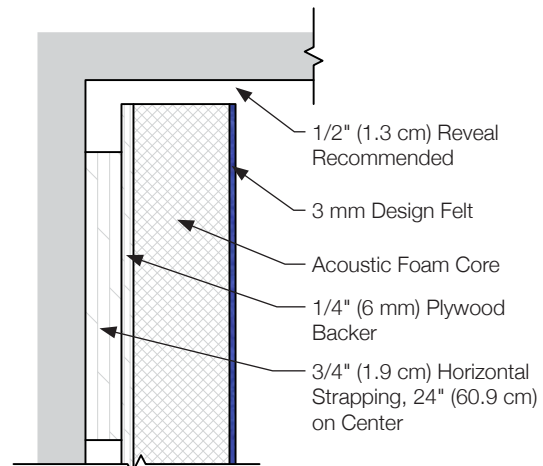




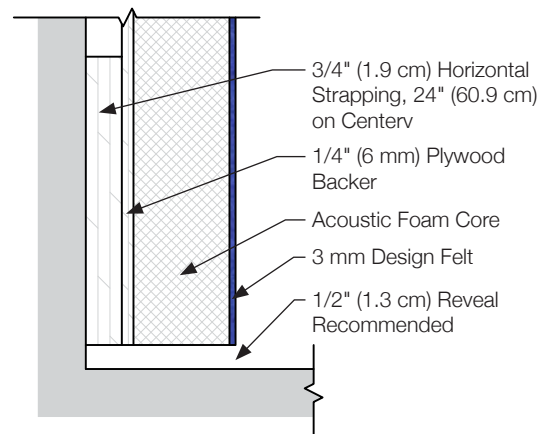
**4 Plan Detail of Assembly**  
Scale: 3" = 1'-0"



**5 Plan Detail at Trim**  
Scale: 6" = 1'-0"



**6 Section Detail at Head**  
Scale: 6" = 1'-0"



**7 Section Detail at Base**  
Scale: 6" = 1'-0"

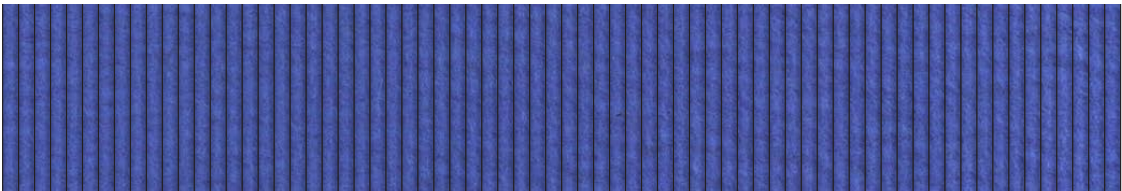
# Standard Configurations

Plank 1.1



Repeat: A | Repeat Width: 4 1/4" (10.8 cm)

Plank 1.2



Repeat: B | Repeat Width: 2 1/4" (5.7 cm)

Plank 1.3



Repeat: AAAB | Repeat Width: 1'-5 1/4" (43.8 cm)

# Specifications

<b>Name</b>	ARO Plank 1
<b>Designer</b>	Architecture Research Office
<b>Content</b>	100% Wool Design Felt + Extruded Acoustic Foam
<b>Felt Thickness</b>	3 mm (1/8 in)
<b>Standard Configurations</b>	Plank 1.1, Plank 1.2, Plank 1.3
<b>Plank Widths</b>	A (Wide): 4 1/4" (10.8 cm) B (Narrow): 2 1/4" (5.7 cm)
<b>Repeat</b>	Plank 1.1: A Plank 1.2: B Plank 1.3: AAABB
<b>Repeat Width</b>	Plank 1.1: 4 1/4" (10.8 cm) Plank 1.2: 2 1/4" (5.7 cm) Plank 1.3: 1'-5 1/4" (43.8 cm)
<b>Maximum Standard Plank Length</b>	9'-0" (2.74 m)
<b>Bench</b>	Plank 1 may be oriented to form a custom bench. Pricing and details are available upon request.
<b>Components</b>	Includes planks + Interlock Mounting System (wall screws not included)
<b>Durability</b>	Contract
<b>Maintenance</b>	Vacuum occasionally to remove general air-borne debris. Should soiling occur, clean with a mild, water-free dry cleaning solvent. Refer to 100% Wool Design Felt Maintenance + Cleaning for detailed care instructions.
<b>Lead Time</b>	ARO Plank is made to order and certain lead times will apply
<b>Environmental</b>	Wool felt is 100% biodegradable and acoustic substrate is 100% recyclable Contains no formaldehyde, 100% VOC free, no chemical irritants, free of harmful substances Contributes to LEED® MR Credit 6: Rapidly Renewable Materials Oeko-Tex® Standard 100 Certified Product Class II
<b>Custom</b>	Custom configurations are available and lengths beyond 9'-0" (2.74 m) must be quoted
<b>Variation</b>	Wool felt is a natural material and minor changes and slight inclusions of natural fiber on the surface are evidence of the 100% natural origin of the material. The natural colorways are undyed wool and color variation may be more pronounced beyond normal commercial range.
<b>Acoustics</b>	ASTM C 423: NRC – 1.0, SAA – 1.0
<b>Colorfastness to Light</b>	Class 4–5 (40 hours)
<b>Colorfastness to Crocking</b>	Class 3–4 (wet), Class 4–5 (dry)

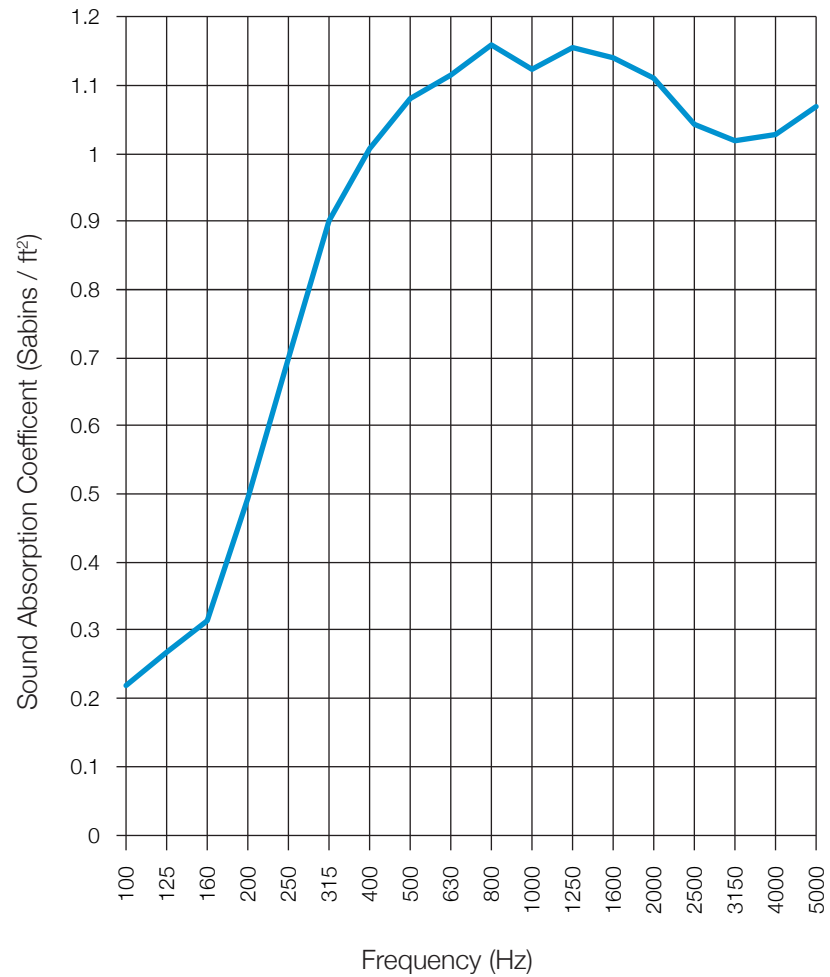
# Standard Colors



## Sound Absorption Results

Frequency (Hz)	Sound Absorption Coefficient (Sabins / ft <sup>2</sup> )
100	0.22
125	0.27
160	0.31
200	0.49
250	0.70
315	0.90
400	1.01
500	1.08
630	1.12
800	1.16
1000	1.12
1250	1.16
1600	1.14
2000	1.11
2500	1.04
3150	1.02
4000	1.03
5000	1.07

SAA = 1.00  
NRC = 1.00



### Test Report ARO Plank 1

For ARO Plank 1, the test report quotes the frequency dependent sound absorption data as well as the single number ratings. Data taken from Test Report RAL™-A14-153 conducted by Riverbank Acoustical Laboratories. Complete test results are available upon request.